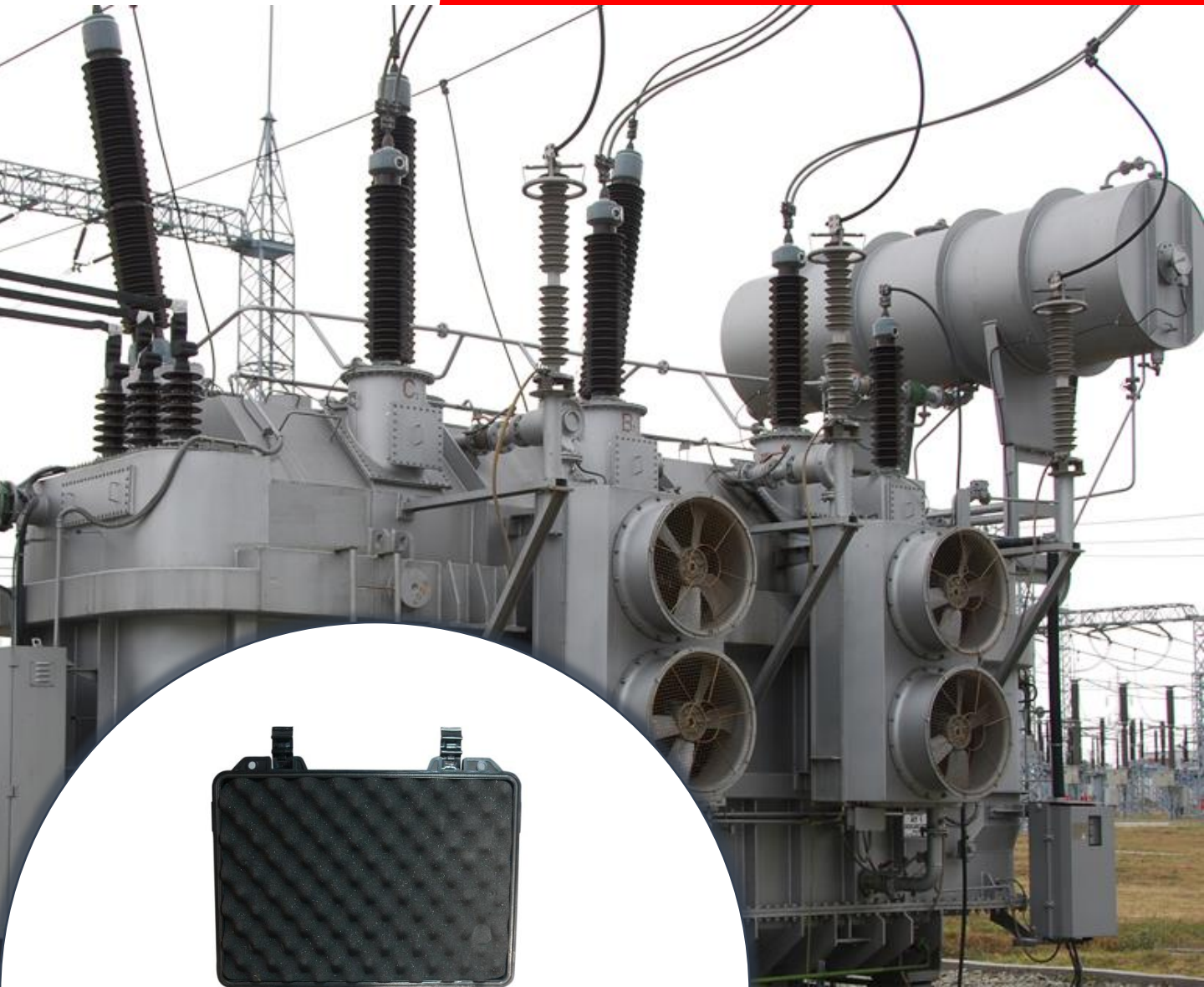




TRM3 Transformer Turn Ratio Meter



REAL TIME SYSTEMS

S-99, Site-2, Industrial area, Loni Road

Mohan Nagar, Ghaziabad - 201007

Uttar Pradesh, India

T: +91 98912 66550

E: info@realtimesystems.in

W: www.realtimesystems.in

Introduction

TRM3 a microprocessor-based new generation fully automatic Transformer Turns Ratio Meter is designed to measure Transformer Ratio, Phase Difference, Polarity, and Excitation Current up to 240 V.

TRM3 incorporates breakthrough technology and design that gives accurate and reliable results repeatedly. It is micro controller operated user friendly and reliable tester. TRM3 incorporates a large sunlight visible LCD screen for display of results. The entire test is done automatically and quickly.

The results can be printed on built-in printer after the test is over. The windows based software is provided for downloading software facilitating Download, Save, Print & Recalling of test data. It is suitable for a wide range of factory, on-site measurement and performance testing applications including:

- ❖ Power and distribution transformers
- ❖ Instrument transformers
- ❖ Verification & Checking of on load Tap Changers
- ❖ Special transformers; like phase shifting, rectifier etc.

Features and Benefits

- ❖ Fully automated measurement
- ❖ Built-in tap changer control unit
- ❖ Better transformer excitation due to higher test voltage of 240V
- ❖ Built-in Memory
- ❖ Built-in printer for quick test report generation.
- ❖ True three-phase and single-phase test
- ❖ Automatic vector group detection
- ❖ Sunlight visible LCD Graphic with back light
- ❖ Robust mobile case for field use

Transformer Load Tap Changer Control

Voltage regulator or LTC tap positions can be changed remotely using the unit's built-in transformer load tap changer. This feature eliminates the need to manually raise or lower tap positions from the transformer control panel.

Technical Specification

Excitation Voltage	: 240Vac, 100Vac, 50Vac
Turn Ratio Measurement	: Up to 10000 (At 240V) : 0.5 - 1000 (At 100V) : 0.5 - 500 (At 50V)
Ratio Accuracy	: $\pm 0.1\%$ of rdg ± 2 digits
Resolution	: 4½ digits
Excitation current	: up to 2000 mA
Current Resolution	: 3 digit
Phase Angle Measurement	: $\pm 180^\circ$
Phase Angle Accuracy	: $\pm 0.1^\circ \pm 2$ digit
Computer Interface	: RS232/USB
Internal data storage	: Non-volatile memory
Display	: LCD Graphic with backlight
Input voltage	: 230 Vac $\pm 10\%$, 50 Hz $\pm 5\%$
Printer	: In-built Thermal Printer
Temp. Range	: 0 to 50°C
Storage Temp.	: 0 to 70°C
Humidity	: 0 to 90% RH
Dimensions	: 419 x 336 x 196 (mm)
Weight	: 10 kg. (approx.)
Protection	: Short Circuit, Overload, Transient Surges, Over - temperature, Induction.

Accessories

- Three Phase test lead set
- Earthing Cable
- Mains Cable
- Communication Cable
- PC software for data exchange and analysis
- Operational manual
- Factory Calibration certificate traceable to NABL Lab
- Magnetic Balance Test Module (Optional)
- Calibration certificate from NABL Lab (Optional)
- Carrying case for Cables