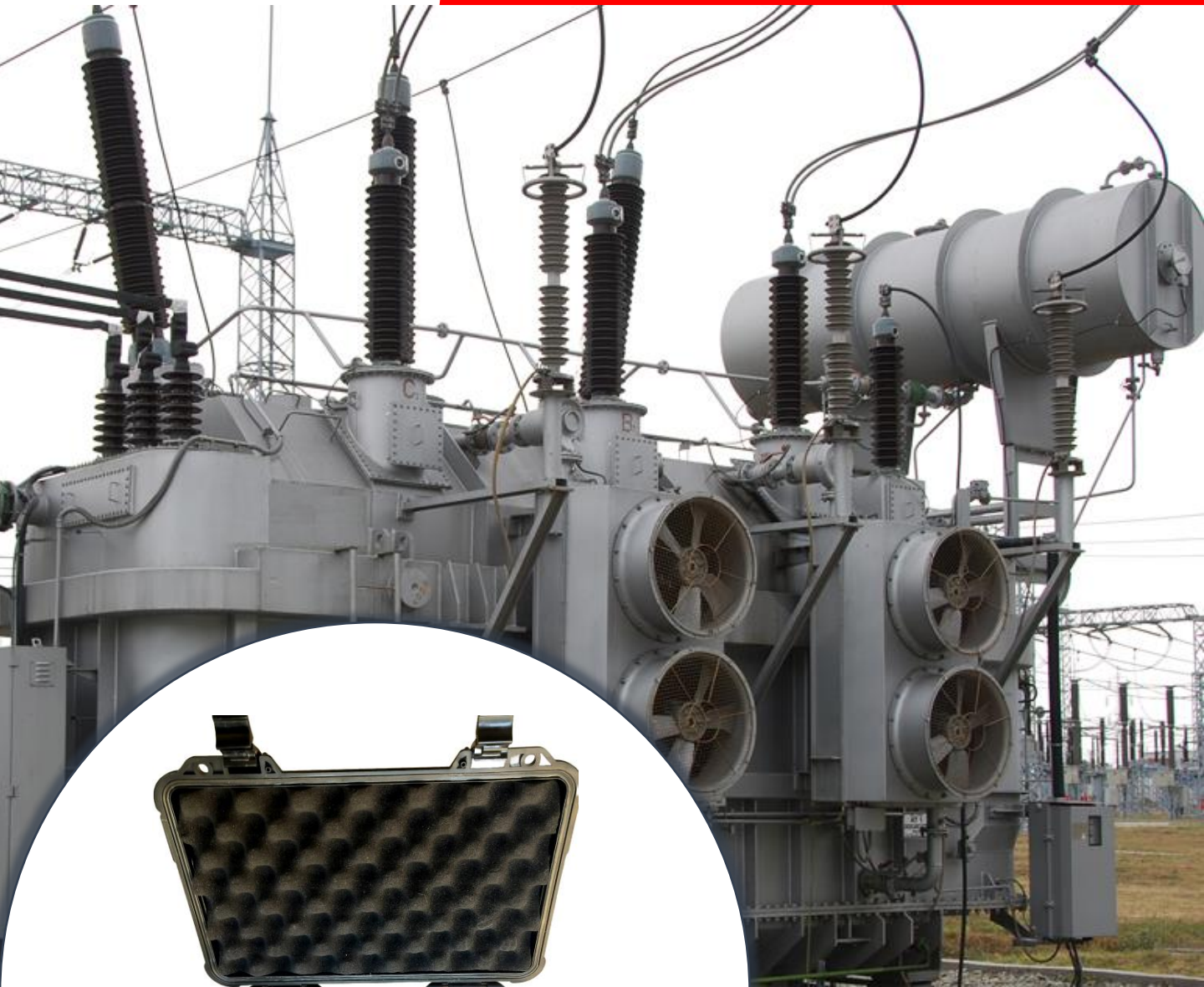




# RMO-18 Micro Ohm Meter (New Model: 5A/1A)



## REAL TIME SYSTEMS

S-99, Site-2, Industrial area, Loni Road

Mohan Nagar, Ghaziabad - 201007

Uttar Pradesh, India

T: +91 98912 66550

E: [info@realtimesystems.in](mailto:info@realtimesystems.in)

W: [www.realtimesystems.in](http://www.realtimesystems.in)

## Introduction

RMO-18 is a high current microprocessor based Automatic Transformer Winding Resistance Meter / Micro Ohm Meter to measure the D.C. resistance of power transformers, other high inductive electrical devices and low resistances. With fast initial settling time this ohmmeter provides the best overall solution to DC resistance testing of transformers. Single or dual channel measurement of primary or primary and secondary transformer winding resistance is displayed on a large Graphic LCD screen. The measurement is based on four wire ratio method which eliminates the requirement of lead compensation. The meter is equipped with correct polarity check and indication of charging and discharging of transformer winding.

RMO-18 is suitable for use in the charged switchyard up to 400 kV. In addition the special circuits employed limit the L di/dt effects that can give rise to noise and unstable readings. The built-in data storage, interfacing to PC & discharge circuit features makes it suitable for a wide range of factory, on-site measurement and performance testing applications including:

- ❖ Low resistance, like, Shunts, Joints etc
- ❖ Transformer DC winding resistance
- ❖ Generator stator/rotor resistance
- ❖ Large motors
- ❖ Built-in Timer for "Heat-run" tests
- ❖ Power connections and circuit breaker testing

## Features and Benefits

The use of special current control circuits enables small & medium transformers to be quickly saturated. This is important when making "heat run" tests to comply with various international standards. The instrument has fully automatic range selection helps when accurate measurement of contact resistance of the taps is important the high resolution, provides an accurate means to detect potential problems.

## Technical Specifications

The RMO-18 is microprocessor based with menu driven options selected via front panel controls. With electronic calibration, the instrument can be easily recalibrated against known external standards. User controlled internal software allows data logging and storage of measurements in the instruments internal memory. The RS232 interface enables stored data to be downloaded to a computer.

Range	: Up to 1000 $\Omega$ (Auto range)
Resolution	: 4½ digit (Best Resolution: 0.1 $\mu\Omega$ at Lowest range)
Test Current	: 5A & 1A DC
Accuracy	: Upto $\pm 0.1\%$ of rdg
Input Supply	: 230 Vac $\pm 10\%$ , 50 Hz $\pm 5\%$ ,
PC Interface	: RS232/USB
Memory	: Internal non-volatile memory for minimum 100 test results
Display	: In-built sunlight visible LCD display
Timer	: Built-in
RTC	: Built-in
Temp. Range:	0 to 50°C
Storage Temp.:	0 to 70°C
Humidity	: 0 to 95% RH non condensing
Dimensions	: 335(L) x 236(W) x 176(H) (mm)
Weight	: 5 kgs. (approx.)
Protection.	: Short Circuit, Overload, Transient Surges, Over temperature, Back EMF, Induction.

## Accessories

Current and potential lead set, Earthing Cable, Power Cord, Operational manual, Calibration certificate.